



# AMB data

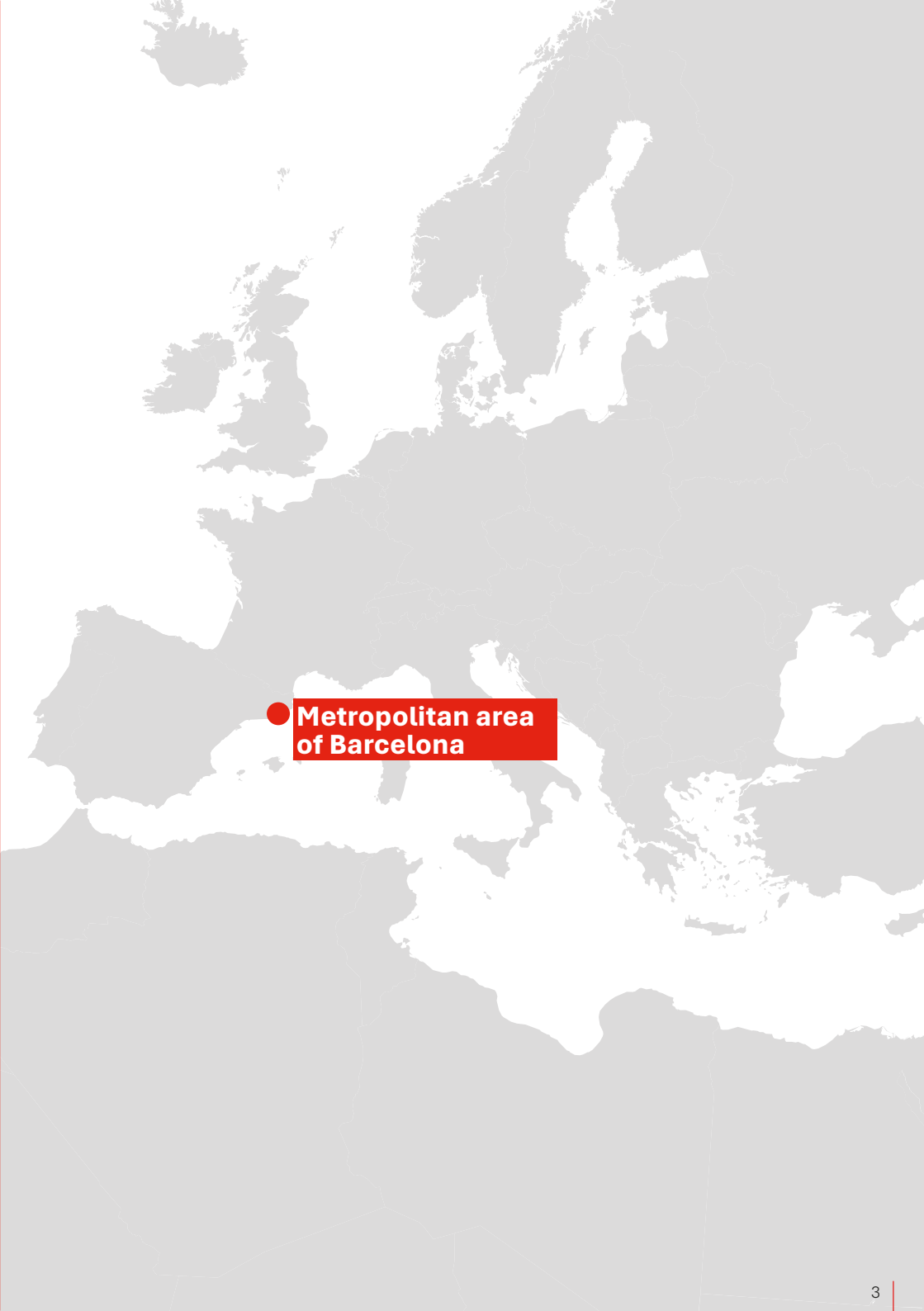
Figures for all  
36 metropolitan municipalities

## **Data**    **» Metropolitan area**

General data	04
Economic activity	06
Culture and leisure	10
Tourism	11

## **Data**    **» Metropolitan services**

Urban planning	12
Territory	14
Housing	20
Mobility and transport	24
Environment	28



● **Metropolitan area  
of Barcelona**

# »» General data



**36**

municipalities

Barcelona 1,702,547 inhab.  
3 municipalities + 100,000 inhab.  
7 municipalities + 50,000 inhab.  
17 municipalities + 10,000 inhab.  
8 municipalities - 10,000 inhab.



**636 km<sup>2</sup>**

surface area

2 % of the surface  
of Catalonia



**3.4 M**

inhabitants

42.5 % of the population  
of Catalonia and 7 % of Spain



*The average age  
of the population is 44.*

## Population density

AMB  
**5,369.7**  
inhab./km<sup>2</sup>

Catalonia  
**251.3**  
inhab./km<sup>2</sup>

Spain  
**96.1**  
inhab./km<sup>2</sup>

# Connectivity, infrastructure and visitors

**55 M** passengers  
at El Prat  
airport

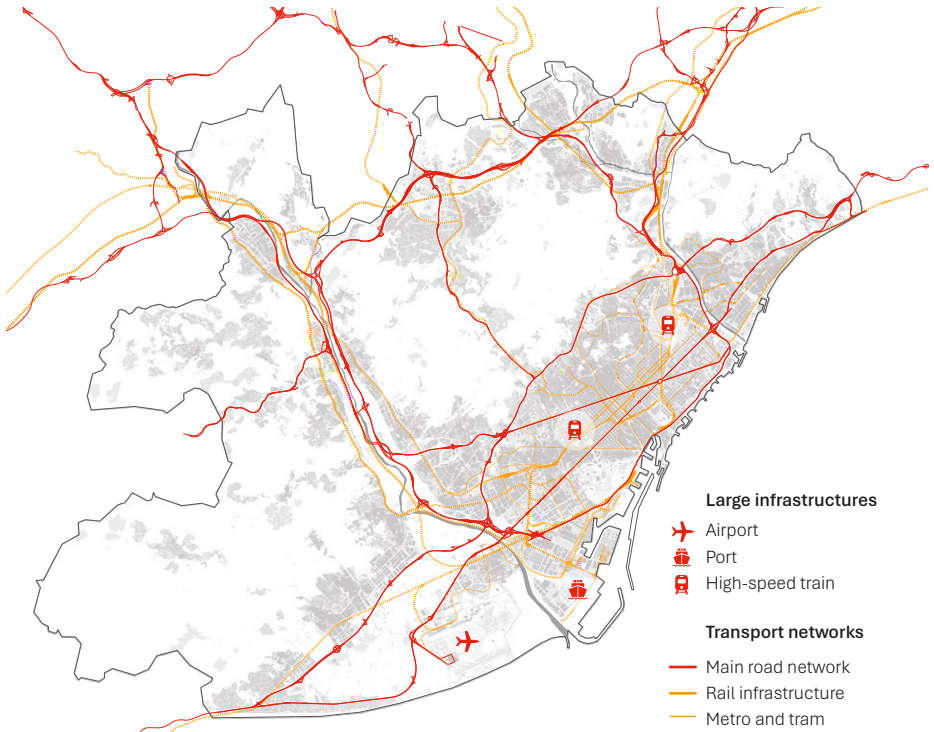
**>>>**  
*7th largest European  
airport by passenger  
volume.*

**10.5 M** passengers at  
Sants train station  
(long-distance  
and high-speed)



**953**  
average  
daily flights

**5.4 M** passengers in the  
port (cruise ships,  
ferries and regular  
shipping lines)



# » Economic activity



55.7% of Catalonia's  
GDP and 10.9% of  
Spain's GDP.



**162,990 M€**

GDP of the 36  
AMB municipalities

## GDP per capita

**48,685 €**  
AMB

**30,968 €**  
Spain

**33,300 €**  
Europe EU-27



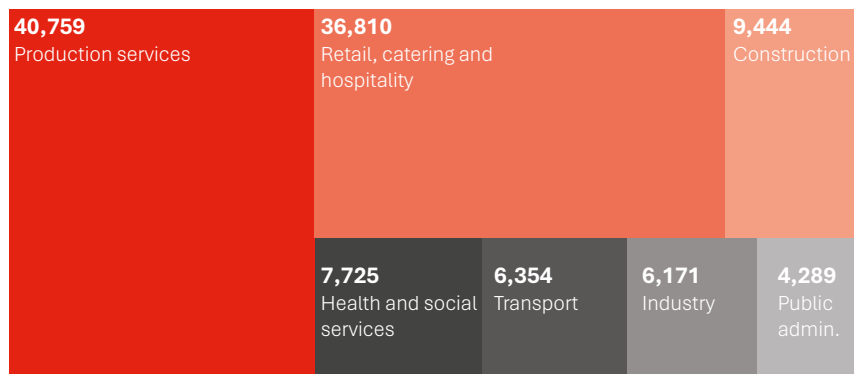
45.5% of Catalonia's  
business fabric.



**111,642**

registered companies

## Companies by sector



\*89 Agricultural companies

Source: Institut Metròpoli. Flaix econòmic 4t trimestre | 2024

## Business and innovation

**2,102** start-ups at the Barcelona & Catalonia Startup Hub

**504** companies registered in the R&D sector

**94** research centres

**11** science and technology parks



*87% of Catalonia's start-ups are seated at the metropolis of Barcelona.*



**177**

patent and design applications

Spanish Patent and Trademark Office (OEPM) EPI applications from the OEPMSTAD database | 2023

## Foreign trade

(Barcelona province)

### Exports

**78,242 M€**

Manufacturing and semi-manufacturing **36,744 M€**

Automotive sector **15,414 M€**

Equipment and consumer goods **13,592 M€**

### Imports

**86,470 M€**

Manufacturing and semi-manufacturing **39,780 M€**

Automotive sector **13,373 M€**

Equipment and consumer goods **19,356 M€**

## International action



**56**

European projects (2021-2025)

• **293.87 M€** total budget

• **183.5 M€** European funding

# Labour market



51 % of Catalonia's population works in the metropolitan area.



**1,899,020**  
Social Security affiliates  
(general system and self-employed)

## Jobs

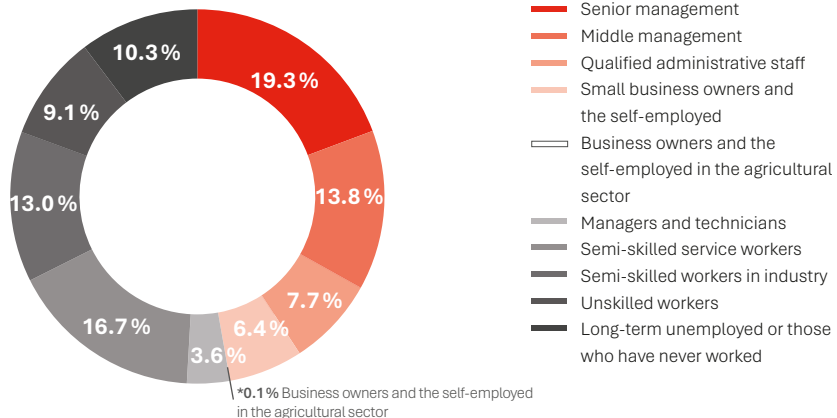
Agriculture	1,005
Industry	162,205
Construction	91,850
Services	1,655,070

<b>Service jobs</b>	<b>1,655,070</b>
Production services	672,482
Transport and communication	113,824
Retail, catering and hospitality	434,098
Public administration and education	233,466
Health and social services	191,400



86 % of jobs are in the service sector.

Socio-economic classification in the 36 AMB municipalities





**1,220,637**

total registered  
contracts

**43%** Permanent

245,437 277,128

Women

Men

**57%** Temporary

374,348 323,724

Women

Men

**33,433 €**  
average  
wage



**7.4%**

unemployment rate

- **77,457** women
- **58,745** men



*49.2 % of contracts  
in Catalonia are drawn up  
in the metropolitan area.*

<b>Unemployed</b>	<b>138,365</b>
No formal education	675
Primary education	10,191
Secondary education	85,822
Vocational training	24,571
University studies	17,106



*57.8 % of those  
unemployed are over 45  
years old.*

# » Culture and leisure

(Barcelona province)

## Cinema

- **69** cinemas
- **418** screens
- **5.8 M** spectators

## Museums

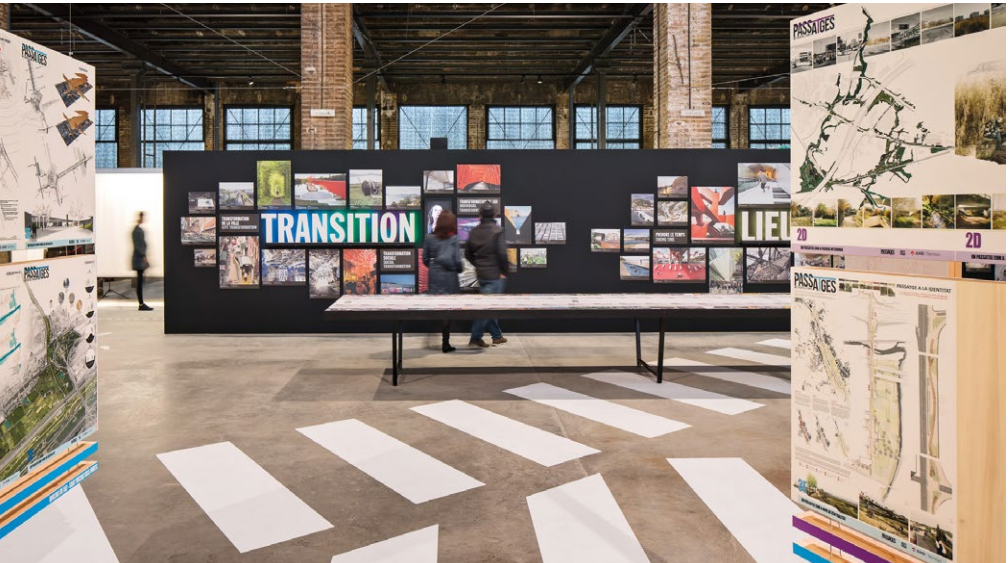
- **66** museums
- **160** collections
- **5.8 M** visitors

## Theatre and dance

- **117** theatres
- **5.6 M** spectators

## Libraries

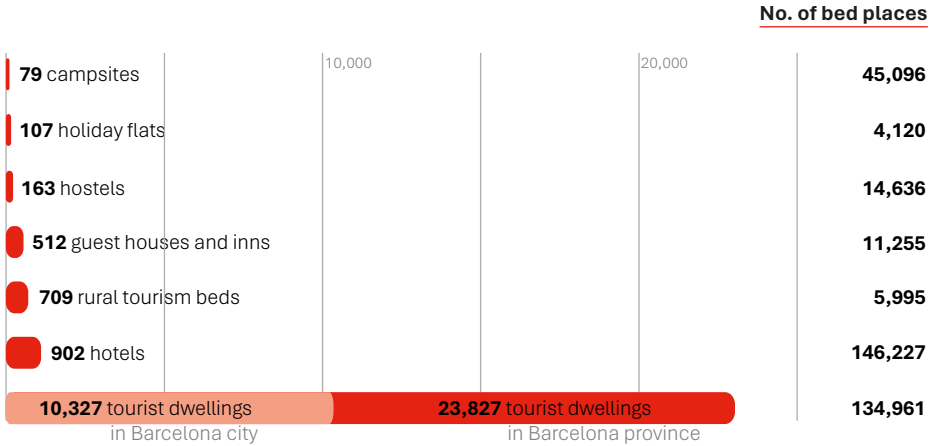
- **254** public libraries



# » Tourism

(Barcelona province)

## Tourist accommodation



**13.1 M**  
travellers  
in Barcelona  
province

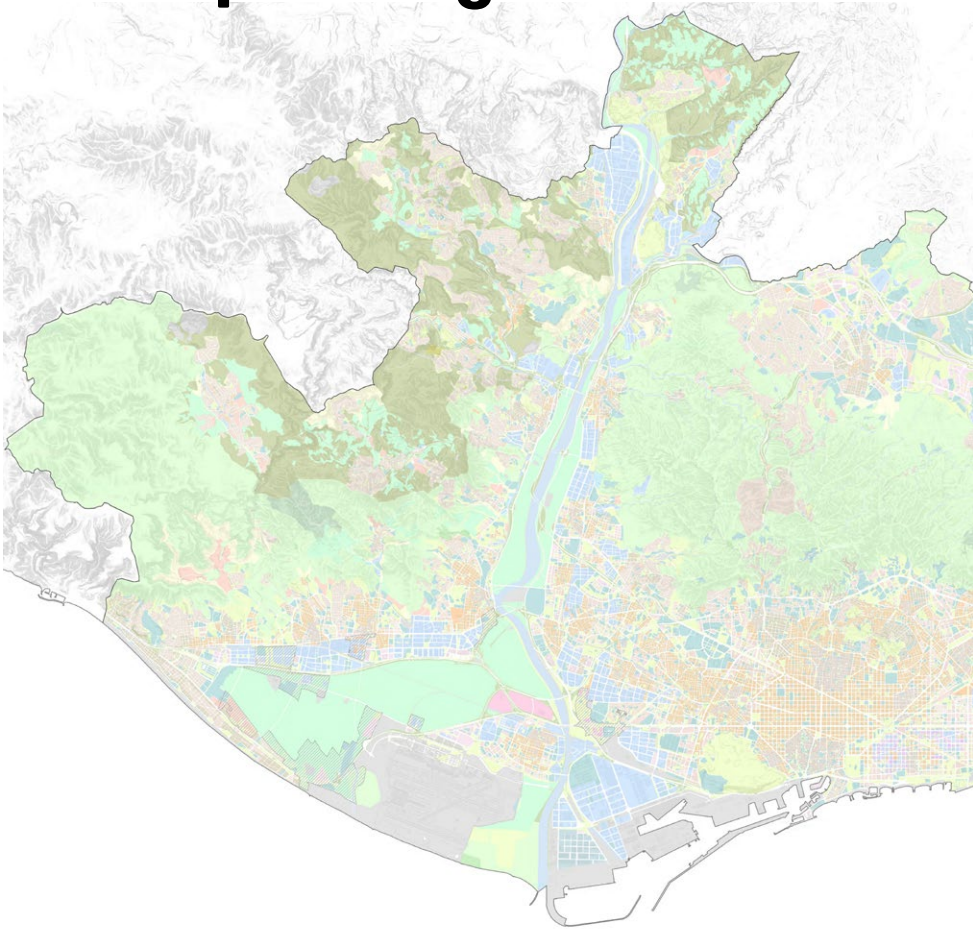


**34.8 M**  
hotel overnight  
stays in Barcelona  
province

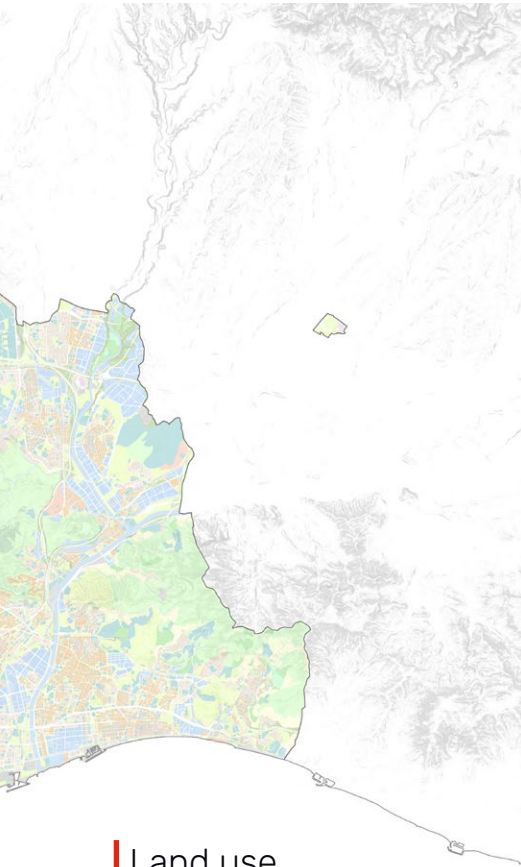


**12,750.3 M€**  
economic impact of  
direct expenditure in  
Barcelona province

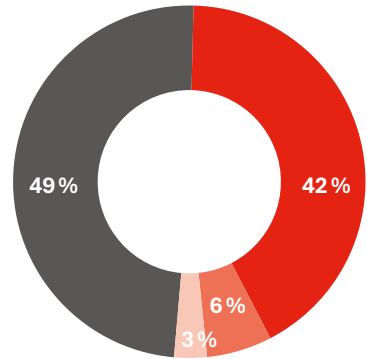
## »» Urban planning



*More than 50 % of the metropolitan territory consists of forests, rivers, beaches and parks.*

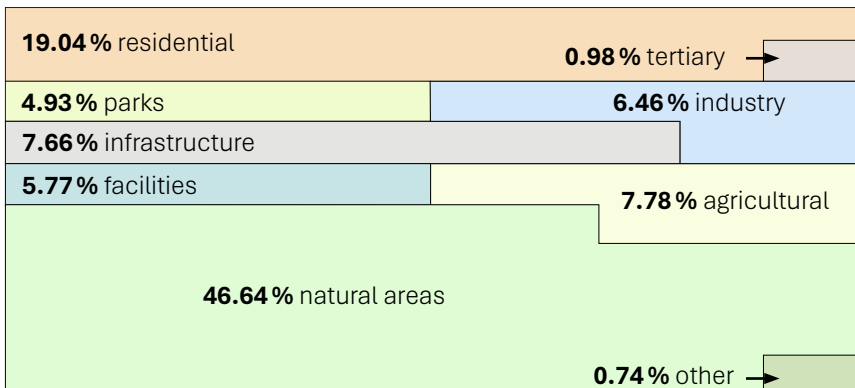


## Land classification



- 49% undevelopable land
- 42% urban land
- 6% undemarcated land for development
- 3% demarcated land for development

## Land use



Data 2024 | Source: AMB. Els usos del sòl a l'àrea i la regió metropolitana de Barcelona del 2021

# »» Territory



**52** parks  
**35** municipalities



*The network of metropolitan parks has great environmental, ecological, scenic and social value and helps to re-nature urban spaces.*



**297.9 ha**  
park surface managed by  
the AMB

Data 2024 | AMB



Can Bada Park | Badalona



## Beaches



The AMB manages 11 of the beaches awarded the Blue Flag distinction in 2024.

**42** beaches  
**8** municipalities  
**30** km  
**200** ha



**11 M**

visitors in high season



**650,000 m<sup>2</sup>**

dune surface area  
(New European Bauhaus Award 2022)

Data 2024 | AMB



Pineda Beach | Viladecans

# »» Territory



River areas

**+ 2.5 M** visits to the Llobregat river area (2022)



*Restoration of river areas through nature-based solutions.*

**+ 65** km of riverside paths by the Llobregat River



**+ 2,500** different animal and plant species in river areas



**+ 300** protected animal species in river areas

Data 2024 | AMB



Lower Llobregat River Valley



Forest areas



**17,000 ha**  
metropolitan forests



*Institutional participation and representation in various consortia to improve territorial resilience.*

**400**

km of roads to improve forest management



*52 % of the territory is open space.*

Data 2024 | AMB



Serra de Collserola Natural Park

# »» Territory

## Projects and works



*The new Sustainability Protocol is the tool for creating a sustainable environment.*

**45** completed works

**72** works in progress

**39** drafted projects

**37** projects being drafted

Data 2024 | AMB



Municipal Archive | Ripollet



## Barcelona ring roads



*All ring road outdoor lighting and over 50% tunnel lighting were replaced with LED technology.*

### 52.5 km

maintenance and continuous improvement of ring roads

- 10.8 km of tunnels

### 15,000

annual inspections of facilities

### 260,000

average vehicles per day

### 2,400

incidents resolved each year

Data 2024 | AMB



Barcelona ring roads

# » Housing

## Housing construction



### IMPSOL

Metropolitan Institute of Land Promotion and Property Management

Local public enterprise under AMB authority

**507** homes under study

**331** planned homes

**308** homes under construction

**901** homes completed or soon-to-be completed



### HMB

Habitatge Metròpolis Barcelona

Public-private operator formed by the AMB (25%), the Barcelona City Council (25%) and the private company Nicrent Residential, SL (50%)

**413** homes under study


**873** planned homes

**296** homes under construction

Data 2024 | AMB



136 homes | Can Ribes | Gavà

 Renovation

**4,314** subsidised renovated homes (2021-2024)



**CMH**  
Metropolitan Housing Consortium

Public association formed by the Barcelona Metropolitan Area (50%) and the Government of Catalonia (50%)



**2,509** homes receiving subsidies for carrying out building work



**1,805** homes receiving subsidies for drafting renovation plans or the building's book

Data 2024 | AMB



Santa Coloma de Gramenet



86 homes in Cornellà de Llobregat

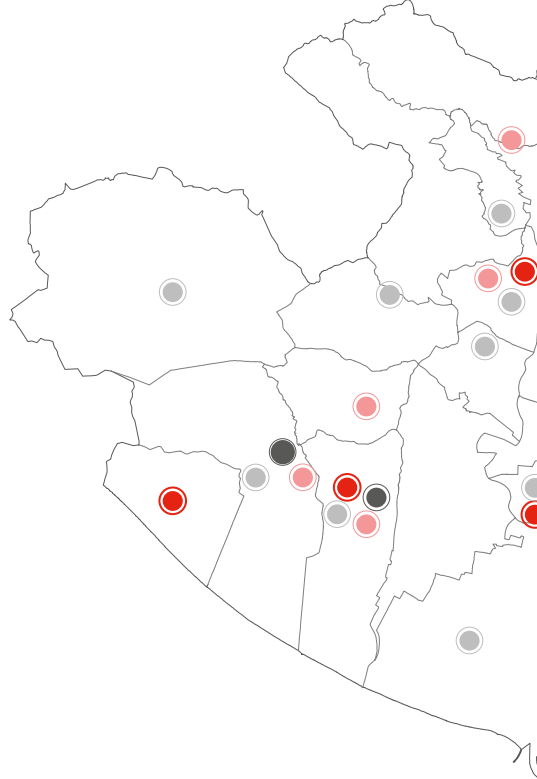


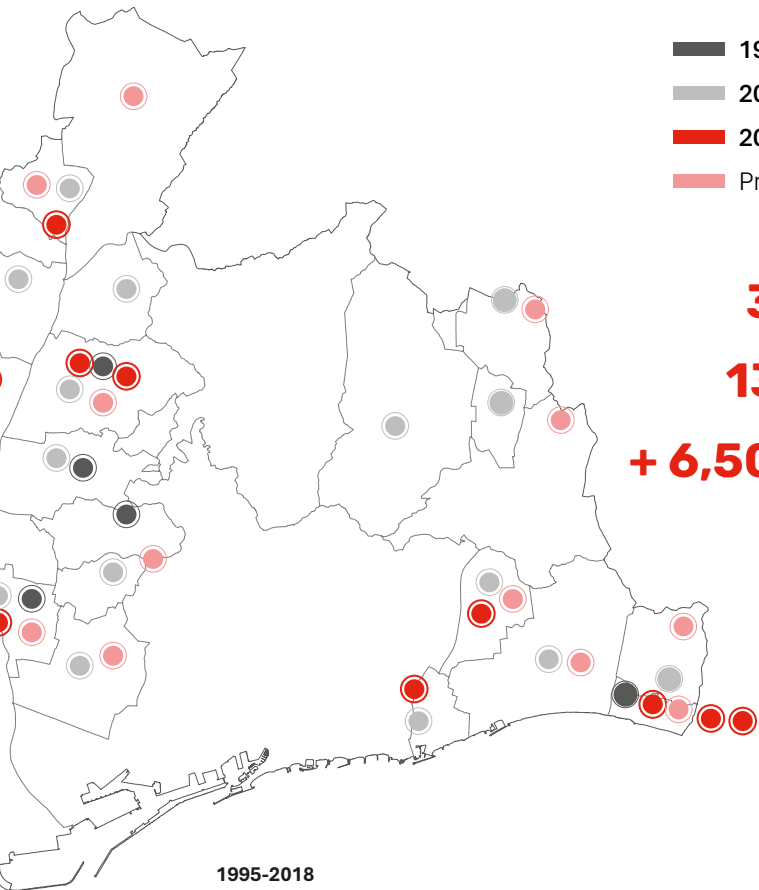
40 homes in Sant Feliu de Llobregat



72 homes in Castelldefels

IMPSOL





- 1995-2018
- 2019-2023
- 2024-2027
- Procedure started

**33** municipalities

**137** developments

**+ 6,500** homes

**1995-2018**

27 municipalities	98 developments	4,827 homes
-------------------	-----------------	-------------

**2019-2023**

8 municipalities	11 developments	731 homes
------------------	-----------------	-----------

**Being awarded or completed**

4 municipalities	4 developments	170 homes
------------------	----------------	-----------

**Under construction**

4 municipalities	5 developments	308 homes
------------------	----------------	-----------

**Planned**

5 municipalities	8 developments	331 homes
------------------	----------------	-----------

**Open to tender**

2 municipalities	3 developments	182 homes
------------------	----------------	-----------

**Tender to be launched**

5 municipalities	8 developments	325 homes
------------------	----------------	-----------

**In management phase**

+ 2,000 homes

In planning process

485 homes

# » Mobility and transport



**340.5 M**

bus passengers per year

- 238 routes
- 2,031 vehicles
- 5,273 stops



**468.7 M**

metro passengers per year

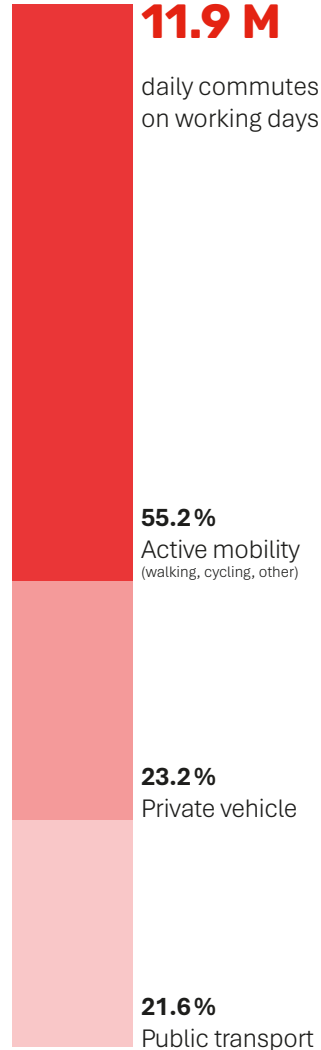
- 8 routes
- 183 trains
- 165 stations



**91 M**

taxi passengers per year

- 10,518 licences
- 500 stops



 Bus

**62.2%** of the fleet  
is fossil fuel-free



### Metropolitan bus

#### Direct management (TMB)

- 103 routes
- 1,075 vehicles
- 215.3 M passengers

#### Indirect management

- 128 routes
- 818 vehicles
- 113.3 M passengers



### Tourist bus

- 5 routes
- 105 vehicles
- 6.2 M passengers



### Airport bus (24 h/7 days)

- 2 routes
- 33 vehicles
- 5.7 M passengers

Data 2024 | AMB



Indirectly managed metropolitan bus



## Sustainable mobility



### Bicivia

**275 km**  
main network

**270 km**  
secondary network



**545 km**



**66%** network implemented



### AMBici

- **2,600** bicycles
- **15** municipalities
- **16,388** users



### Bicibox

- **3,193** slots
- **31** municipalities
- **23,884** users

Data April 2025 | AMB



Bicivia



## Car parks

**431** park-and-ride places reserved free of charge for public transport users

**+ 3,400** loading and unloading points managed in 13 municipalities



## EV charging stations

**+ 70** EV charging points in 33 municipalities

**7,555** registered users

**73,237** charges per year



## Low emissions zone (LEZ)

The AMB has promoted the low emissions zone within the Barcelona ring roads (ZBE Rondes de Barcelona) and supports the creation of municipal LEZs.

**12** metropolitan LEZs



## Shared electric motorbike

**+ 5,500** electric motorbikes

**8** municipalities

Data April 2025 | AMB



EV charging station

# » Environment



Water cycle



**103 litres**

household consumption  
per inhabitant per day



**9** ETAPs  
drinking water  
treatment plants



**1** desalination plant



**7** EDARs  
wastewater treatment  
plants



**3** ERAs  
water reclamation  
plants



*Facilities managed by  
a public-private model  
based on moderation,  
efficiency, savings and  
reuse.*





## Waste prevention and management



*Waste management,  
treatment and recovery,  
besides promotion of  
waste reduction and  
separate collection.*

**4** ecoparks

**3** sorting plants

**86** fixed waste collection  
centres

**38** mobile waste  
collection centres



**1.15 kg**

household waste  
production per inhabitant  
per day

Data 2024 | AMB



Packaging treatment plant | Gavà-Viladecans



## Energy transition



*The AMB Climate and Energy Plan is the roadmap to face climate change and energy transition.*



**176**

photovoltaic roofs on public buildings and waste treatment plants



**27**

photovoltaic roofs under the ESCO model



**244**

climate shelters in 31 municipalities

Data 2024 | AMB



Solar panel installation at the El Carme Social Health Centre | Badalona

