

**Local government authority  
providing services to  
3.4 million people  
in a cohesive, sustainable  
and innovative environment.**

The metropolitan area of Barcelona is the principal conurbation of the western Mediterranean.



42.5%

*population of Catalonia*

55.7%

*GDP of Catalonia*

7%

*population of Spain*

11%

*GDP of Spain*

# AMB

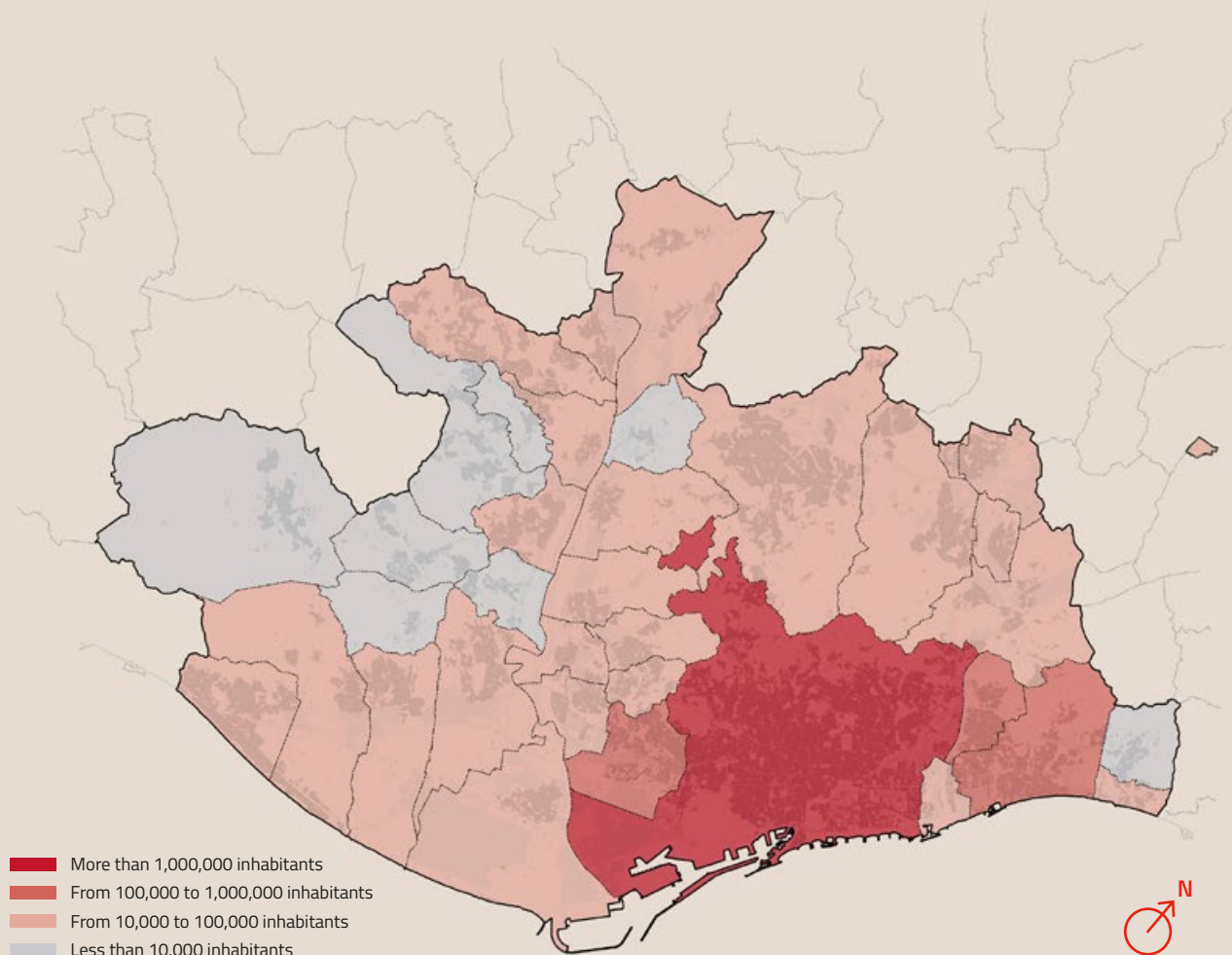
The Barcelona Metropolitan Area (AMB) is the public authority that provides services to the metropolitan territory of Barcelona.

36 municipalities

3.4 million inhabitants

636 km<sup>2</sup>

5,369.7 inhabitants/km<sup>2</sup>



# Governance

- The AMB is the only metropolitan area in Spain with a legal framework (Law 31/2010 of the Parliament of Catalonia).
- The Metropolitan Council is composed of 90 councillors (36 mayors and 54 councillors). The president represents the AMB and heads its government and administration.
- The political and management structure consists of the Presidency, the Executive Vice-presidency, four institutional vice-presidencies, six area vice-presidencies, the General Management, and the technical and administrative staff.
- The overall consolidated budget for the group is **€2,882.93 M** (2025). It includes the administration and structure of the AMB (**€1,406.79 M**), companies and other autonomous bodies (**€1,572.45 M**).
- The Metropolitan Investment Plan 2024-2028, earmarked with **€423.15 M**, finances investment in natural and public spaces, infrastructures, facilities, and social and neighbourhood policies that structure and strengthen the metropolis.

## Competences and cross-cutting services

### Competences



Territorial management



Urban planning



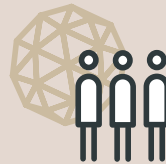
Housing



Mobility and transport



Environment



Social and economic development

### Services

Innovation

---

Digitalisation

---

Strategic planning

---

International action

---

# Territory

The AMB plays a technical role in policy implementation and metropolitan natural areas management, with the main objective of achieving a greener metropolis.



## BEACHES

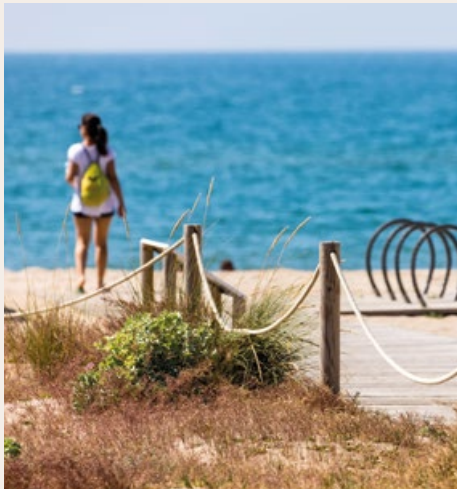
Management of **42 beaches** with 11 million visitors in high season

## RIVER AREAS

Nature-based solutions in projects, management and maintenance

## FOREST AREAS

Support for municipalities in boosting ecosystem services and improving resilience



*El Prat de Llobregat beach*



*Floodable ford on the Ripoll River*



*Serra de Collserola Natural Park*

## CROSS-CUTTING METROPOLITAN-SCALE PROJECTS

- Transformation of C-245 road into an avenue
- Integration of B-23 road and Diagonal avenue up to the Llobregat River
- N-150 road, the new Vallès Avenue
- Metropolitan Strategy in the Besòs area



## PARKS

Management of **+50 metropolitan parks** in 35 municipalities

## PROJECTS AND WORKS

Implementation of the new Sustainability Protocol in public space and facilities

## RING ROADS

Maintenance and improvement of Barcelona ring roads. Renewal of 100 % outdoor lighting and 50 % tunnel lighting



*Turonet Park in Cerdanyola del Vallès*



*New municipal archive in Ripollet*

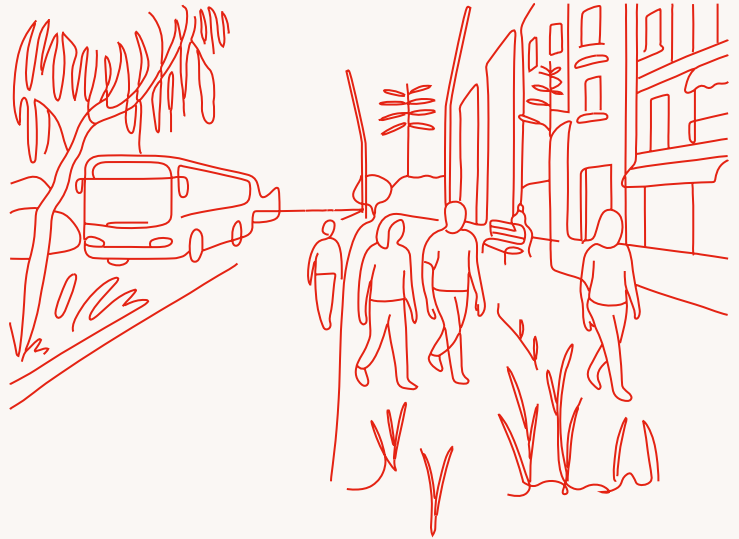


*Barcelona ring roads*

# Urban planning

The AMB collaborates with metropolitan councils and provides technical and legal assistance related to land planning, land-use and urban management.

It also has land-use integrated planning competences through the development of the Metropolitan Urban Master Plan (PDUM).



---

**PLANNING**  
INTEGRATED LAND-USE  
PLANNING

**TERRITORIAL STUDIES**  
ANALYSIS, EVALUATION  
AND FOLLOW-UP

**CARTOGRAPHY**  
BASIC MAP PRODUCTION

## Metropolitan Urban Master Plan (PDUM)

- Preserving ecological functions and ecosystem services
- Consolidating a polycentric system structured by metropolitan avenues and green axes
- Promoting active, sustainable mobility by rethinking metropolitan infrastructures
- Planning urban settlements to ensure balance, cohesion and liveability
- Improving the efficiency of urban metabolism and minimising environmental impacts

4 %

increase of protected open spaces (land declared as SNU)

+215,000

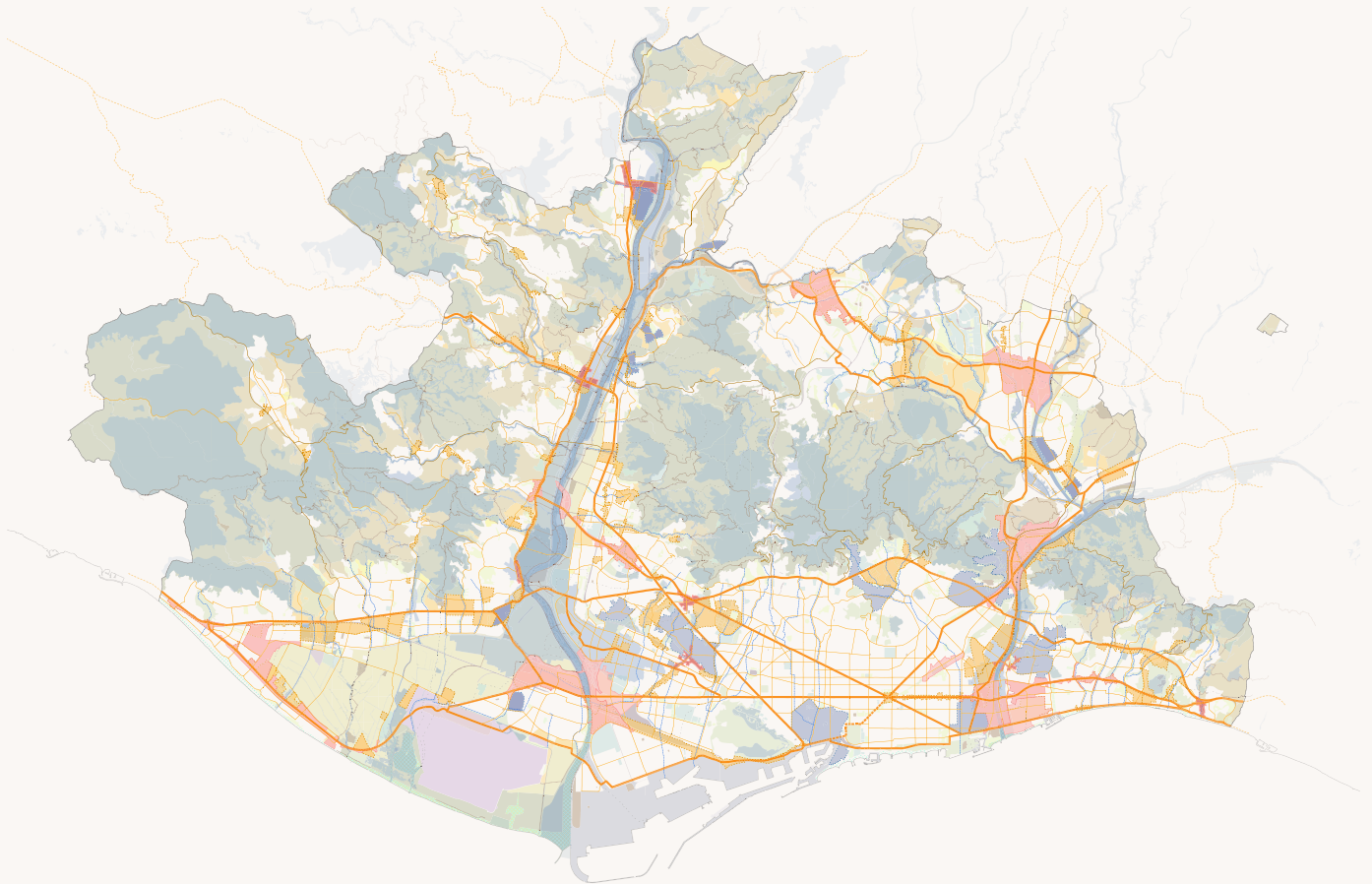
potential new homes (2025-2050)

+23.5 M m<sup>2</sup>

potential floor area for economic activity (2025-2050)

+240,000

potential new jobs (2025-2050)



- Metropolitan avenues and structural streets
- New metropolitan centrality
- New metropolitan opportunity site
- Urban regeneration areas (residential development)
- Urban regeneration areas (economic development)

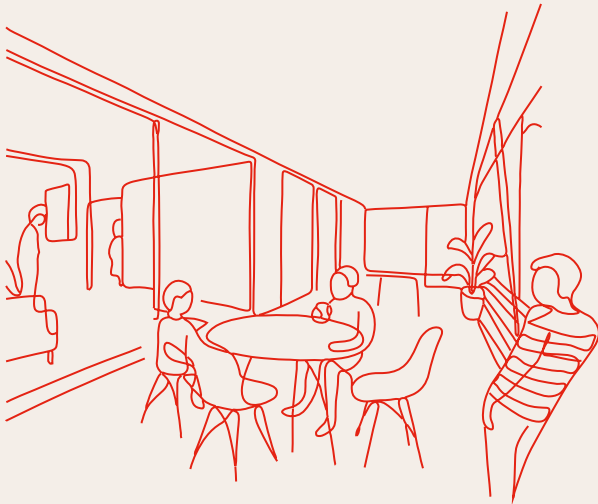
**Areas in open spaces**

- Streams
- Paths
- Core area
- Agroforestry mosaic
- Agricultural plain
- Interesting private green

# Housing

The AMB performs its competences in land and housing policies established by urban planning legislation. Residential projects in which it is involved focus on social innovation for the development of sustainable and inclusive subsidised housing.

New schemes for public-private collaboration through competitions for the granting of surface rights are promoted.



## REHABILITATION OF BUILDINGS AND NEIGHBOURHOODS



The Metropolitan Housing Consortium (CMH) is a public association set up by the Barcelona Metropolitan Area (50%) and the Government of Catalonia (50%), whose principal task is the renovation of homes, buildings and neighbourhoods.



Rehabilitation



Construction



Management

---

# +4,314

*subsidised homes  
(2021-2024)*



## CONSTRUCTION OF SOCIAL RENTAL HOUSING



The Metropolitan Institute of Land Development and Property Management (IMPSOL) is a local public business organisation under the Barcelona Metropolitan Area (AMB). It has its own legal status and is a special urban development body defined in urban development legislation.

IMPSOL promotes social rental housing of high architectural quality looking for social innovation and applying new technological values to construction.

---

29 +1,200

*developments*  
(2019-2025)

*homes*  
(2019-2025)

## PUBLIC-PRIVATE MANAGEMENT MODEL



Habitatge Metròpolis Barcelona is a public-private partnership operator set up with the aim of building and managing affordable rental housing in Barcelona and its metropolitan area.

The target for the next 6 years is to build a stock of 4,500 affordable rental homes.

---

116 M€ 4,500

*capital*

*homes*  
(2025-2030)

# Mobility and transport



The AMB's competences in mobility and transport focus on the integrated planning of mobility and the management of public transport services (bus, metro and taxi).

The drive and planning for sustainable mobility is promoted through the development of cycling infrastructure and measures to cope with pollution.



---

## BUS

### Metropolitan bus

Direct management (TMB):  
103 routes and 1,075 vehicles  
215.3 M passengers

Indirect management:

128 routes and 818 vehicles  
113.3 M passengers

### Tourist bus

5 routes and 105 vehicles  
6.2 M passengers

### Airport bus

2 routes and 33 vehicles  
5.7 M passengers

---

## METRO

8 lines and 183 trains  
468.7 M passengers

---

## TAXI

10,518 licences  
693 private hire licences



---

11.9 M

daily commutes on working days (2023)

---

809 M

metro and bus passengers

---

55.2%

journeys on foot.  
76.8% of total journeys involve sustainable mobility.

Main Bicivia network



---

## BICYCLE

### AMBici

2,600 shared electric bicycles

### Bicivia

545 km of bikeable metropolitan network

### Bicibox

3,193 secure bike parking lockers

---

## P+R CAR PARKS

431 parking spaces reserved free of charge for public transport users

---

## LEZ

Low emission zones, 12 municipalities

---

## EV CHARGING STATIONS

+70 charging points for electric vehicles

---

## ELECTRIC MOTOSHARING

+5,500 electric motorbikes, 8 municipalities

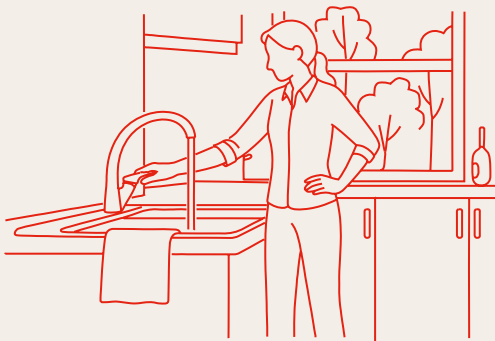
# Environment

## WATER CYCLE MANAGEMENT

The AMB manages the facilities that ensure the water cycle operation through a public-private model based on the moderation, efficiency, savings and reuse principles. The whole water cycle system consists of 9 drinking water treatment plants, 7 wastewater treatment plants and 3 water reclamation plants.

103 L

*per inhab. per day of household consumption (2023)*



*Drinking water treatment plant in Sant Joan Despí*



Supply



Sanitation



Reuse

212  
hm<sup>3</sup>/year

*supplied water (2023)*

238  
hm<sup>3</sup>/year

*treated water (2023)*

68  
hm<sup>3</sup>/year

*reclaimed water (2023)*

## WASTE PREVENTION AND MANAGEMENT

The AMB is responsible for the management, treatment and recovery of waste while promoting waste reduction, selective collection and reuse. It manages 4 ecoparks, 3 sorting plants, and 86 permanent and 38 mobile waste collection centres.



## ENERGY TRANSITION

176

*photovoltaic roofs  
on public buildings  
and waste plants*

186

*climate shelters in  
24 municipalities*



1.15  
kg/inhab./day

*waste generated  
(2023)*



# Social and economic development

The AMB promotes economic development and social cohesion policies with the aim of generating new opportunities, guaranteeing equity and improving quality of life.

## Economic promotion

### Economic Development Agency

- Companies, industrial areas and labour market
- Internationalisation of companies
- Emerging economies
- Innovation and technology
- Attracting investment

## Social cohesion

### Social policy

- Social care
- Gender equality
- Social tariffs for water and public transport
- Labour market and vocational training
- Neighbourhoods programme



# International action and digitalisation

The AMB participates in international networks to strengthen its external presence and take the voice of metropolitan areas to the European Union and the UN. It also participates in priority cooperation areas through direct actions or experience exchanges. Furthermore, it prepares prospective studies, digitalisation and analysis of the metropolitan phenomenon.

## Internationalisation

- Influence on the European and international political agenda
- Attracting European and international funds
- Innovation and knowledge management in metropolitan areas
- International economic projection
- International cooperation

## International cooperation

### Cross-cutting principles

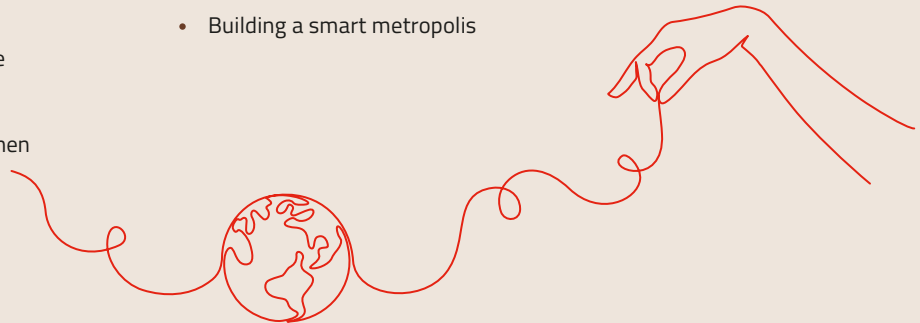
- Democratic governance
- Diversity
- Environmental sustainability and climate change
- Culture of peace and non-violence
- Empowerment and equity between men and women
- Human rights approach

## International networks



## Digital metropolis

- Promoting a digital metropolis
- Implementing the new economy of digitalisation
- Building a smart metropolis

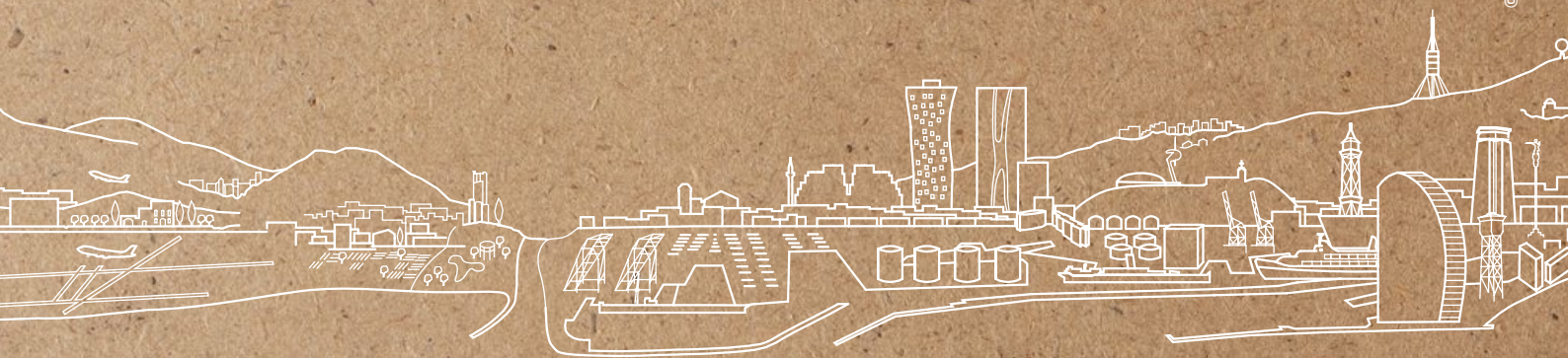


1	<b>Badalona</b> 21.2 km <sup>2</sup> 226,219 inhabitants	10	<b>Corbera de Llobregat</b> 18.4 km <sup>2</sup> 15,783 inhabitants	19	<b>La Palma de Cervelló</b> 5.5 km <sup>2</sup> 3,048 inhabitants	28	<b>Sant Feliu de Llobregat</b> 11.8 km <sup>2</sup> 46,381 inhabitants
2	<b>Badia del Vallès</b> 0.9 km <sup>2</sup> 13,109 inhabitants	11	<b>Cornellà de Llobregat</b> 7.0 km <sup>2</sup> 91,196 inhabitants	20	<b>El Papiol</b> 9.0 km <sup>2</sup> 4,358 inhabitants	29	<b>Sant Joan Despí</b> 6.2 km <sup>2</sup> 35,012 inhabitants
3	<b>Barberà del Vallès</b> 8.3 km <sup>2</sup> 33,644 inhabitants	12	<b>Esplugues de Llobregat</b> 4.6 km <sup>2</sup> 47,700 inhabitants	21	<b>El Prat de Llobregat</b> 31.4 km <sup>2</sup> 65,910 inhabitants	30	<b>Sant Just Desvern</b> 7.8 km <sup>2</sup> 20,815 inhabitants
4	<b>Barcelona</b> 101.4 km <sup>2</sup> 1,686,208 inhabitants	13	<b>Gavà</b> 30.8 km <sup>2</sup> 47,961 inhabitants	22	<b>Ripollet</b> 4.3 km <sup>2</sup> 39,430 inhabitants	31	<b>Sant Vicenç dels Horts</b> 9.1 km <sup>2</sup> 28,595 inhabitants
5	<b>Begues</b> 50.4 km <sup>2</sup> 7,439 inhabitants	14	<b>L'Hospitalet de Llobregat</b> 12.4 km <sup>2</sup> 282,299 inhabitants	23	<b>Sant Adrià de Besòs</b> 3.8 km <sup>2</sup> 38,672 inhabitants	32	<b>Santa Coloma de Cervelló</b> 7.5 km <sup>2</sup> 8,334 inhabitants
6	<b>Castellbisbal</b> 31.0 km <sup>2</sup> 12,965 inhabitants	15	<b>Molins de Rei</b> 15.9 km <sup>2</sup> 26,930 inhabitants	24	<b>Sant Andreu de la Barca</b> 5.5 km <sup>2</sup> 27,039 inhabitants	33	<b>Santa Coloma de Gramenet</b> 7.0 km <sup>2</sup> 120,903 inhabitants
7	<b>Castelldefels</b> 12.9 km <sup>2</sup> 69,196 inhabitants	16	<b>Montcada i Reixac</b> 23.5 km <sup>2</sup> 37,096 inhabitants	25	<b>Sant Boi de Llobregat</b> 21.5 km <sup>2</sup> 84,588 inhabitants	34	<b>Tiana</b> 8.0 km <sup>2</sup> 9,323 inhabitants
8	<b>Cerdanyola del Vallès</b> 30.6 km <sup>2</sup> 57,831 inhabitants	17	<b>Montgat</b> 2.9 km <sup>2</sup> 12,646 inhabitants	26	<b>Sant Climent de Llobregat</b> 10.8 km <sup>2</sup> 4,181 inhabitants	35	<b>Torrelles de Llobregat</b> 13.6 km <sup>2</sup> 6,136 inhabitants
9	<b>Cervelló</b> 24.1 km <sup>2</sup> 9,633 inhabitants	18	<b>Pallejà</b> 8.3 km <sup>2</sup> 11,811 inhabitants	27	<b>Sant Cugat del Vallès</b> 48.2 km <sup>2</sup> 98,649 inhabitants	36	<b>Viladecans</b> 20.4 km <sup>2</sup> 67,179 inhabitants

---

**Total AMB**  
**635.8 km<sup>2</sup>**  
**3,398,219 inhabitants**





[www.amb.cat](http://www.amb.cat)